

This Responsible Investment Policy<sup>1</sup> (this “Policy”) of Crestline Investors, Inc. (“Crestline”) describes Crestline’s approach to responsible investment, including the integration of Environmental, Social, and Governance (“ESG”) into its investment strategies and objectives.

## Purpose, Objective and Scope

Crestline maintains a culture that recognizes the value of socially responsible investment and views implementing policies incorporating ESG as complementary to its traditional financial analysis and portfolio construction techniques when possible. Our investment approach includes responsible investment as a factor to identify sources of risk and return for its clients. The investment teams are directed to consider material ESG information where appropriate as part of the investment process in accordance with this Policy.

Crestline is a signatory to the United Nations Principles for Responsible Investment (“UN PRI”). As a signatory, Crestline recognizes that applying UN PRI principles to its investment philosophy may better align its clients with the broader objectives of society as articulated by the United Nations sustainable development goals.

This Policy applies to investments for all Crestline funds and managed accounts (“Crestline Accounts”) except for those described in [Appendix A](#) hereto.

## Core Principles

The following principles guide Crestline’s approach to ESG integration:

1. **Engagement.** Work closely with our portfolio companies (or sponsors in the case of Fund Liquidity Solutions trades) throughout the investment life cycle to consider relevant ESG factors and incorporate these factors into our investment approach.
2. **Focus on Materiality.** Focus attention on financially material ESG factors, as defined by a) their importance to a given investment’s circumstance and b) the likelihood and magnitude of material ESG factors having a business, environmental or social-related financial impact.
3. **Adapt to Each Strategy.** Adapt our ESG approach to the specific investment and levels of control over each investment strategy.
4. **Integrity of Management.** Incorporate policies that prohibit bribery; improper political contributions; money laundering; equal opportunity and labor law violations; fair compensation, worker health and safety, and human rights abuses.
5. **Governance.** Treat strong corporate governance as a core principle and an integral part of our investment strategy.
6. **Embrace Diversity.** Actively support diversity, equity, and inclusion at Crestline and within the investment community.

---

<sup>1</sup> This Policy is subject to change as Crestline considers necessary or advisable.

## Approach

Crestline takes a pragmatic view toward incorporating ESG information to effectively evaluate the financial risks and returns affecting each investment. Crestline's approach to ESG integration is to have a flexible policy designed to increase the total amount of information considered by investment teams to supplement their investment analysis. This Policy allows for a flexible, cohesive firm-wide approach, while permitting diversity of processes across the different investment teams and strategies. Crestline aims to apply best practice approaches for its Responsible Investment Policy.

Corporate governance is a cornerstone of our investment philosophy. We believe that it is a key indicator of a company's financial and non-financial success. As such, our responsible investment approach hinges on our evaluation of and intervention, when feasible, through corporate governance. We believe that companies that adhere to legal and social norms can be seen as responsible corporate citizens. Although market expectations for ESG adherence may change over time, we believe companies with strong governance should typically be leaders within their respective industries. This same approach holds true for our sponsor partners/borrowers in the case of Fund Liquidity Solutions investments.

ESG information is not the sole consideration for investment decisions by the Investment Committee. Rather, Crestline investment teams assess a variety of economic and financial indicators, which may include material ESG information, to make investment decisions.

## Application

Our investment processes are focused on factors that contribute to an investment's financial success, which may include ESG considerations. We adhere to this Policy across all asset classes, but the varying nature of our investments requires us to tailor our approach in certain areas depending on the investment's strategy, industry, security type, and business nature.

ESG integration is incorporated by utilizing Crestline's core investment processes to help identify additional sources of financial risk and return. Crestline, when appropriate, considers available ESG information when conducting research and due diligence prior to investment, and as part of ongoing monitoring.

Where investments are not well suited for ESG integration, Crestline looks to its Core Principles and best industry practices when applying this Policy. We will then make investment decisions as standard practice based on the likelihood of capital preservation and expected risk-adjusted returns. Covenants and ESG guidelines may be a part of our evaluation as we consider new investments.

Integrating ESG factors into our investment evaluation process does not mean that ESG information is the sole or primary consideration for an investment decision. Rather, Crestline's portfolio managers and analyst teams evaluate and weigh a variety of financial and non-financial factors, which can include ESG considerations, to make investment decisions. The relevance of ESG considerations to investment decisions varies across asset classes and strategies. By increasing and diversifying the information assessed by the portfolio management team where relevant, we believe that we are able to generate a more holistic view of an investment, which we believe will generate opportunities to enhance returns for our clients. Adoption of this Policy and adherence to the UN PRI should not be interpreted by Crestline's

clients to mean that every investment made by a Crestline Account going forward will appear to be consistent with ESG investment. Rather, as a registered investment adviser, Crestline owes its clients a fiduciary duty, which Crestline does not view to be inconsistent with complying with this Policy or adhering to the UN PRI.

The investment teams are not required to exclude companies from portfolios due to poor ESG ratings, nor are they limited to using a specific method (e.g., declining to invest or deciding to divest) to integrate ESG considerations. Instead, the investment teams evaluate ESG characteristics alongside other strategic, business and financially-material company characteristics (e.g., valuations, growth and profitability) as part of the overall assessment of an investment opportunity when making investment decisions. However, there may be circumstances where it is appropriate to consider not making an investment, including, but not limited to (1) investments in specific companies or industries that potentially have a material negative impact on Crestline's reputation, or (2) as specially identified by the Investment Committee.

With respect to any Crestline Accounts that have launched prior to September 22, 2021, the date that this Policy was adopted ("Existing Funds"), application of this Policy going forward will not alter the investment strategies or objectives of such Existing Funds. Rather, incorporation of ESG considerations into the investment selection process for such Existing Funds going forward will serve to complement Crestline's existing risk management framework that applies when performing due diligence on potential investments in a manner consistent with its duties to its clients.

## Engagement

Engagement is considered successful to the extent that it improves transparency and controls, minimizes risks, and enhances investment returns.

For our credit strategy investments, our active dialogue with company management and/or sponsors allows us to (1) monitor the progress of the investment as compared to our underwriting expectations and assess any developments, including ESG-related issues that could negatively affect our financial position, and (2) have discussions encouraging borrowers to improve on ESG matters identified during the investment process.

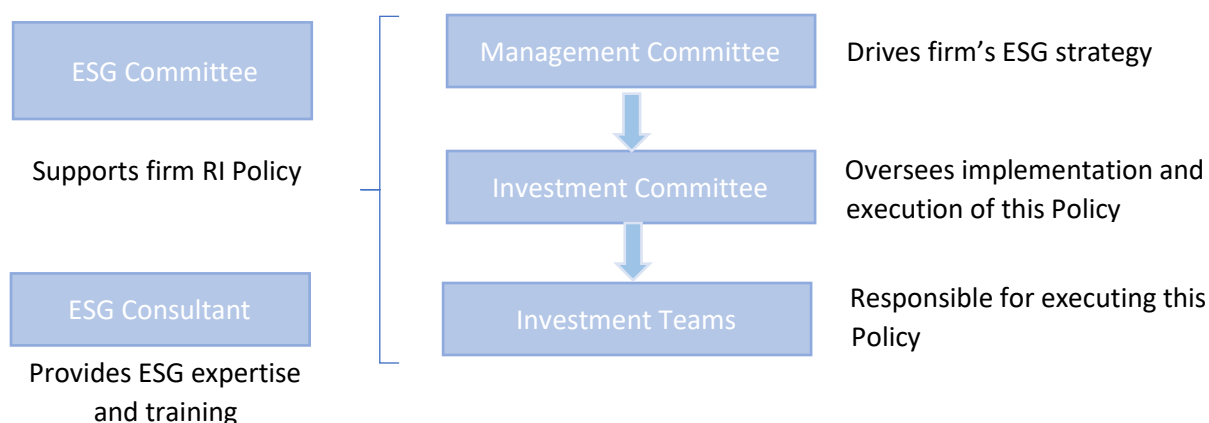
Across Crestline's private credit strategies, we are generally lenders and thus do not have ownership control or influence in the same way as traditional private equity. Nonetheless, in select cases, Crestline encourages the borrower to engage on ESG matters identified during the investment process. Prior to investment, if parties do not align with certain ESG objectives which we find material, we may choose to not proceed with the transaction. In situations where we own equity or have more ability to influence the company, such as through a board seat, in select cases we strive to take a more active role with those companies by encouraging conversation around ESG initiatives to preserve or improve enterprise value using ESG factors and practices.

## Engagement – Proxy Voting

Voting rights with respect to each investment may vary, but Crestline considers what in our opinion is in the best interests of clients, taking into account several relevant factors, as set forth in Crestline’s Proxy Voting Policy.

## Governance

Crestline’s Management Committee approves this Policy and defines its scope and applicability. The Management Committee requires that the relevant Investment Committee oversee and be responsible for implementing this Policy and holds the relevant Investment Committee accountable for integrating available ESG information into their investment analysis, where appropriate. The investment teams are responsible for applying this Policy to the extent that it is relevant to the asset class and has a material financial impact. This Policy is reviewed annually by the Management Committee.



## Training

Crestline believes effective implementation of this Policy depends on a widespread understanding of ESG factors, how they impact value, and the tools necessary to evaluate them. To support the implementation of this Policy, Crestline has instituted an educational program to enhance the knowledge of its investment professionals. As part of this program, Crestline provides investment professionals with access to ESG documentation and conducts ongoing educational programs.

## Documentation

ESG information identified as material varies by product type, strategy, industry, company and market trends. Materiality of ESG information is determined by each investment team using internally developed guidelines alongside established industry practices, such as those published by PRI or the Sustainable Accounting Standards Board (“SASB”). When ESG information is considered a material factor, our investment team documents the findings in accordance with this Policy and incorporates the findings as part of its analysis into its investment memorandum.

## **Reporting**

We highly value the transparency that we receive from our investments and portfolio companies and seek to provide meaningful transparency to our clients. Crestline intends to report annually on its responsible investment activities and progress. This reporting will include highlights of ESG information collected from the portfolio companies and/or sponsors. Crestline participates in the UN PRI Reporting Framework, which includes the UN PRI Transparency and Assessment Reports. The UN PRI Assessment Report results are used as a key performance indicator to measure the outcomes of our responsible investment activities.

## **Definitions**

This Policy supplements and should be read in conjunction with the applicable Prospectus, Confidential Private Placement Memorandum, Private Offering Memorandum, Partnership Agreement, Account Agreement or other applicable governing agreement of the relevant Crestline Account (each, a “Governing Document”). In the event of a conflict between this Policy and the applicable Governing Document, the provisions of the applicable Governing Document shall control.

**Policy Supplement – ESG Standards for Opportunistic Investing Strategy**

To the extent determined to be material in accordance with this Policy, the following represents examples of ESG factors Crestline may consider in the application of this Policy to potential investments for its Opportunistic Investing Strategy.

| Category             | ESG Considerations  | Our Approach  |
|----------------------|---|---|
| <b>Environmental</b> | <ul style="list-style-type: none"> <li>Climate change</li> <li>Energy, water, and waste management and mitigation</li> <li>Utilization of renewable resources</li> <li>Commitment to conservation</li> <li>Energy efficiency</li> </ul>                             | <ul style="list-style-type: none"> <li>Evaluate the physical and transitional risks associated with climate change</li> <li>Review environmental factors material within the investment time horizon</li> <li>Identify companies using renewable energy sources or employing energy/waste efficient strategies</li> </ul>                           |
| <b>Social</b>        | <ul style="list-style-type: none"> <li>Rights and well-being of people and communities</li> <li>Employee recruitment, retention, and workplace diversity</li> <li>Employee health and safety</li> <li>Workplace safety</li> <li>Supply chain risk</li> </ul>        | <ul style="list-style-type: none"> <li>Review borrowers for labor law violations, worker health and safety and human rights abuses</li> <li>Review workplace safety violations</li> <li>Review employee hiring, retention and diversity policies</li> <li>Review company's social responsibility principles</li> </ul>                              |
| <b>Governance</b>    | <ul style="list-style-type: none"> <li>Board structure and diversity</li> <li>Minority ownership</li> <li>Business ethics</li> <li>Legal and regulatory compliance</li> <li>Commitment to strong corporate governance</li> <li>Overall business strategy</li> </ul> | <ul style="list-style-type: none"> <li>Evaluate corporate board and ownership diversity</li> <li>Review borrowers for bribery, improper political contributions, money laundering and other unethical business practices</li> <li>Review control structure</li> <li>Review known open or settled litigation or government investigations</li> </ul> |
| <b>Engagement</b>    | <ul style="list-style-type: none"> <li>Active engagement</li> </ul>   | <ul style="list-style-type: none"> <li>Engage with management annually</li> </ul>   |

## Policy Supplement – ESG Standards for Direct Lending Strategy

To the extent determined to be material in accordance with this Policy, the following represents examples of ESG factors Crestline may consider in the application of this Policy to potential investments for its Direct Lending Strategy.

| Category             | ESG Considerations  | Our Approach  |
|----------------------|---|---|
| <b>Environmental</b> | <ul style="list-style-type: none"> <li>Climate change</li> <li>Energy, water, and waste management and mitigation</li> <li>Utilization of renewable resources</li> <li>Commitment to conservation</li> <li>Energy efficiency</li> </ul>                             | <ul style="list-style-type: none"> <li>Evaluate the physical and transitional risks associated with climate change</li> <li>Review environmental factors material within the investment time horizon</li> <li>Identify companies using renewable energy sources or employing energy/waste efficient strategies</li> </ul>                           |
| <b>Social</b>        | <ul style="list-style-type: none"> <li>Rights and well-being of people and communities</li> <li>Employee recruitment, retention, and workplace diversity</li> <li>Employee health and safety</li> <li>Workplace safety</li> <li>Supply chain risk</li> </ul>        | <ul style="list-style-type: none"> <li>Review borrowers for labor law violations, worker health and safety and human rights abuses</li> <li>Review workplace safety violations</li> <li>Review employee hiring, retention and diversity policies</li> <li>Review company's social responsibility principles</li> </ul>                              |
| <b>Governance</b>    | <ul style="list-style-type: none"> <li>Board structure and diversity</li> <li>Minority ownership</li> <li>Business ethics</li> <li>Legal and regulatory compliance</li> <li>Commitment to strong corporate governance</li> <li>Overall business strategy</li> </ul> | <ul style="list-style-type: none"> <li>Evaluate corporate board and ownership diversity</li> <li>Review borrowers for bribery, improper political contributions, money laundering and other unethical business practices</li> <li>Review control structure</li> <li>Review known open or settled litigation or government investigations</li> </ul> |
| <b>Engagement</b>    | <ul style="list-style-type: none"> <li>Active engagement</li> </ul>   | <ul style="list-style-type: none"> <li>Engage with management annually</li> </ul>   |

**Policy Supplement – ESG Standards for Fund Liquidity Solutions Strategy**

To the extent determined to be material in accordance with this Policy, the following represents examples of ESG factors Crestline may consider in the application of this Policy to potential investments for its Fund Liquidity Solutions Strategy.

| Category             | ESG Considerations  | Our Approach  |
|----------------------|---|---|
| <b>Environmental</b> | <ul style="list-style-type: none"> <li>Climate change</li> <li>Energy, water, and waste management and mitigation</li> <li>Utilization of renewable resources</li> <li>Commitment to conservation</li> <li>Energy efficiency</li> </ul>                             | <ul style="list-style-type: none"> <li>Evaluate the physical and transitional risks associated with climate change</li> <li>Review environmental factors material within the investment time horizon</li> <li>Identify companies using renewable energy sources or employing energy/waste efficient strategies</li> </ul>                           |
| <b>Social</b>        | <ul style="list-style-type: none"> <li>Rights and well-being of people and communities</li> <li>Employee recruitment, retention, and workplace diversity</li> <li>Employee health and safety</li> <li>Workplace safety</li> <li>Supply chain risk</li> </ul>        | <ul style="list-style-type: none"> <li>Review borrowers for labor law violations, worker health and safety and human rights abuses</li> <li>Review workplace safety violations</li> <li>Review employee hiring, retention and diversity policies</li> <li>Review company's social responsibility principles</li> </ul>                              |
| <b>Governance</b>    | <ul style="list-style-type: none"> <li>Board structure and diversity</li> <li>Minority ownership</li> <li>Business ethics</li> <li>Legal and regulatory compliance</li> <li>Commitment to strong corporate governance</li> <li>Overall business strategy</li> </ul> | <ul style="list-style-type: none"> <li>Evaluate corporate board and ownership diversity</li> <li>Review borrowers for bribery, improper political contributions, money laundering and other unethical business practices</li> <li>Review control structure</li> <li>Review known open or settled litigation or government investigations</li> </ul> |
| <b>Engagement</b>    | <ul style="list-style-type: none"> <li>Active engagement</li> </ul>   | <ul style="list-style-type: none"> <li>Engage with management annually</li> </ul>   |

**Policy Supplement – ESG Standards for Insurance Strategies**

To the extent determined to be material in accordance with this Policy, the following represent examples of ESG factors Crestline may consider in the application of this Policy to potential investments for its Insurance Strategies.

| <b>Category</b>                           | <b>ESG Considerations</b>   | <b>Our Approach</b>   |
|---|---|---|
| <b>Suitability &amp; Ethical Behavior</b> | <ul style="list-style-type: none"><li>▪ Transparent Information &amp; Fair Advice for Customers</li></ul> | <ul style="list-style-type: none"><li>▪ Screen third party relationships for unfair business practices</li><li>▪ Adopt industry practices to protect all stakeholders’ personal information</li></ul>                               |
| <b>Investments</b>                        | <ul style="list-style-type: none"><li>▪ Adherence to Crestline RI Policy</li></ul>                        | <ul style="list-style-type: none"><li>▪ Incorporate Crestline Responsible Investment Policy for internally evaluated investments</li><li>▪ Duplicate this Policy and workflow for investments outside this Policy’s scope</li></ul> |

**Policy Supplement – ESG Standards for Climate Change**

Crestline understands the importance of considering the investment risks associated with climate change and fully supports the principles of the Task Force on Climate-Related Financial Disclosures (“TCFD”). We recognize climate change is increasingly becoming a material risk for our investments as they face the impacts from (1) the physical effects of climate change, (2) changes in the economic business environment, and (3) regulatory actions designed to reduce emissions. Our clients are also increasingly concerned and may expect Crestline to take a systematic approach in addressing climate risk.

The following represents a summary of how Crestline intends to address climate risk within its investment time horizon:

1. During due diligence, the investment teams determine an individual investment’s financial exposure to climate risk by considering the following risk factors:
  - Physical risks – This includes material risks of financial loss from the increased frequency of extreme weather events, fire, flooding, extended droughts and other physical risks associated with climate change.
  - Transitional risks – Within an investment’s time horizon, the investment team considers transitional risks such as shifts in government policy and other changes in the economic landscape that could materially impair an asset’s valuation.
2. If investments are exposed to significant climate-related risks within the investment’s time horizon, the investment team (1) may engage with company management and/or sponsors to define an action plan to mitigate climate-related risks, and (2) may integrate climate considerations into the valuation model.

**Appendix A**

This Policy excludes AUM within the SummitTX strategy and Crestline's Derivative Solutions strategy.